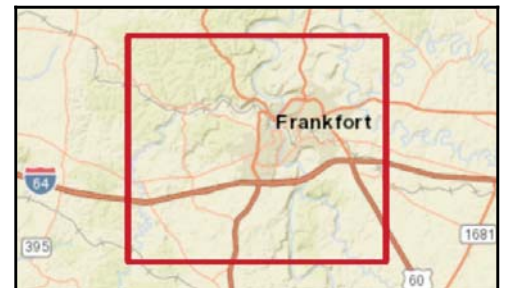
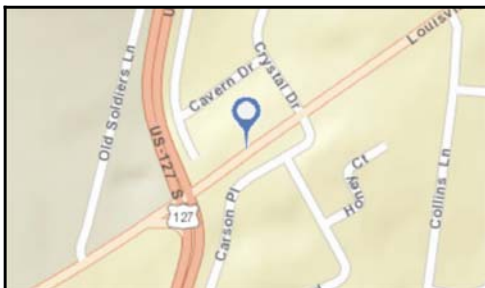
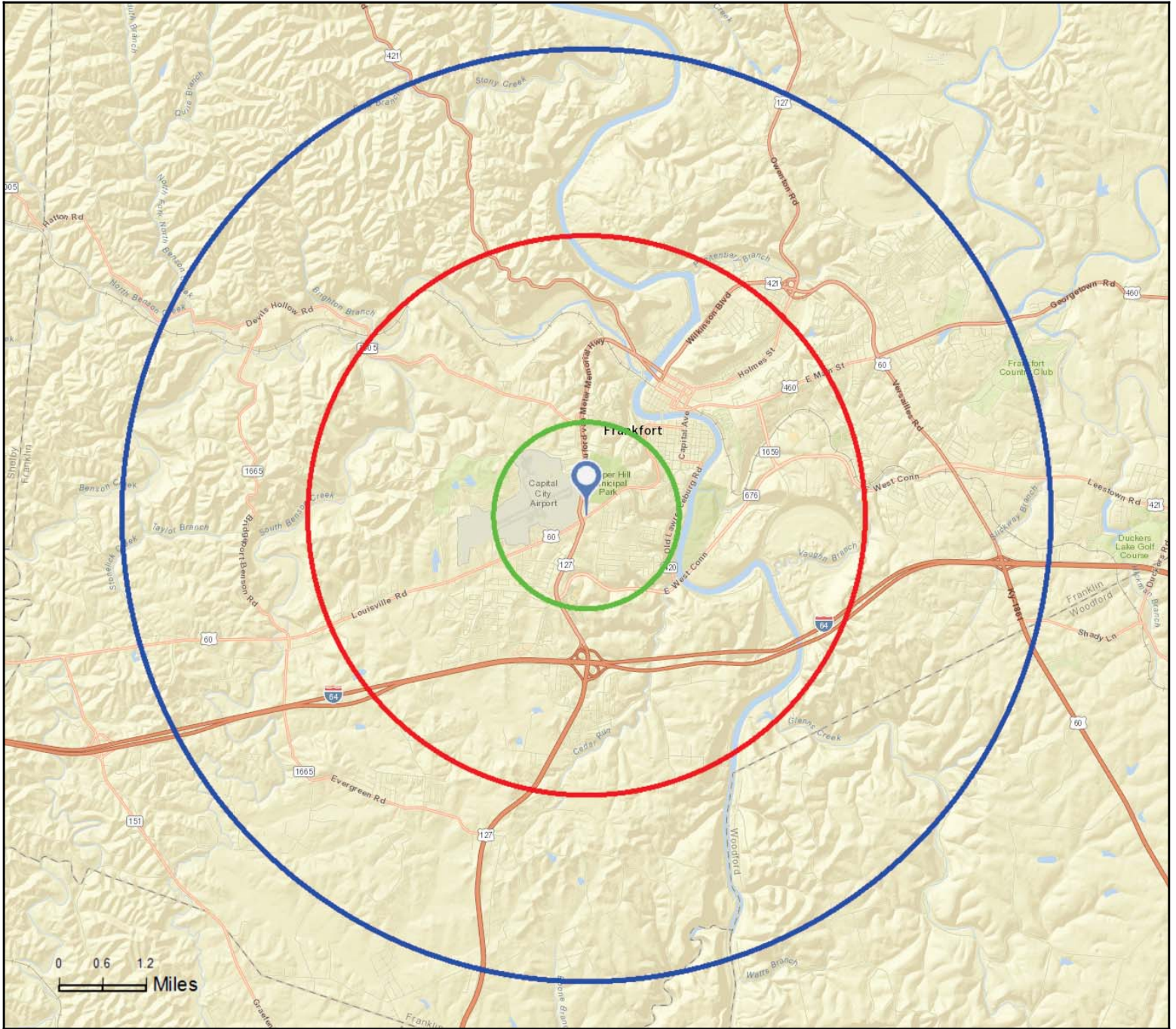




Site Map

970 Louisville Rd, Frankfort, Kentucky, 40601
Rings: 1, 3, 5 mile radii

Prepared by Esri
Latitude: 38.18100
Longitude: -84.89369



August 23, 2016



Executive Summary

970 Louisville Rd, Frankfort, Kentucky, 40601
Rings: 1, 3, 5 mile radii

Prepared by Esri
Latitude: 38.18100
Longitude: -84.89369

	1 mile	3 miles	5 miles
Population			
2000 Population	4,938	19,602	38,736
2010 Population	5,065	19,672	39,271
2016 Population	5,123	20,054	40,120
2021 Population	5,186	20,455	40,960
2000-2010 Annual Rate	0.25%	0.04%	0.14%
2010-2016 Annual Rate	0.18%	0.31%	0.34%
2016-2021 Annual Rate	0.24%	0.40%	0.42%
2016 Male Population	46.2%	48.3%	48.2%
2016 Female Population	53.8%	51.7%	51.8%
2016 Median Age	43.6	39.4	40.1

In the identified area, the current year population is 40,120. In 2010, the Census count in the area was 39,271. The rate of change since 2010 was 0.34% annually. The five-year projection for the population in the area is 40,960 representing a change of 0.42% annually from 2016 to 2021. Currently, the population is 48.2% male and 51.8% female.

Median Age

The median age in this area is 43.6, compared to U.S. median age of 38.0.

Race and Ethnicity

2016 White Alone	85.1%	78.3%	79.8%
2016 Black Alone	8.9%	15.0%	13.2%
2016 American Indian/Alaska Native Alone	0.5%	0.4%	0.3%
2016 Asian Alone	2.1%	2.5%	2.1%
2016 Pacific Islander Alone	0.0%	0.0%	0.0%
2016 Other Race	1.1%	1.1%	1.7%
2016 Two or More Races	2.3%	2.7%	2.8%
2016 Hispanic Origin (Any Race)	3.5%	2.7%	3.6%

Persons of Hispanic origin represent 3.6% of the population in the identified area compared to 17.9% of the U.S. population. Persons of Hispanic Origin may be of any race. The Diversity Index, which measures the probability that two people from the same area will be from different race/ethnic groups, is 39.1 in the identified area, compared to 63.5 for the U.S. as a whole.

Households

2000 Households	2,405	8,661	16,517
2010 Households	2,385	8,505	16,704
2016 Total Households	2,415	8,718	17,141
2021 Total Households	2,447	8,902	17,518
2000-2010 Annual Rate	-0.08%	-0.18%	0.11%
2010-2016 Annual Rate	0.20%	0.40%	0.41%
2016-2021 Annual Rate	0.26%	0.42%	0.44%
2016 Average Household Size	2.06	2.11	2.23

The household count in this area has changed from 16,704 in 2010 to 17,141 in the current year, a change of 0.41% annually. The five-year projection of households is 17,518, a change of 0.44% annually from the current year total. Average household size is currently 2.23, compared to 2.23 in the year 2010. The number of families in the current year is 10,009 in the specified area.

Data Note: Income is expressed in current dollars

Source: U.S. Census Bureau, Census 2010 Summary File 1. Esri forecasts for 2016 and 2021. Esri converted Census 2000 data into 2010 geography.



Executive Summary

970 Louisville Rd, Frankfort, Kentucky, 40601
Rings: 1, 3, 5 mile radii

Prepared by Esri
Latitude: 38.18100
Longitude: -84.89369

	1 mile	3 miles	5 miles
Median Household Income			
2016 Median Household Income	\$42,880	\$39,023	\$43,834
2021 Median Household Income	\$50,664	\$44,254	\$50,477
2016-2021 Annual Rate	3.39%	2.55%	2.86%
Average Household Income			
2016 Average Household Income	\$59,474	\$53,290	\$57,831
2021 Average Household Income	\$66,317	\$58,807	\$64,004
2016-2021 Annual Rate	2.20%	1.99%	2.05%
Per Capita Income			
2016 Per Capita Income	\$28,725	\$24,142	\$25,409
2021 Per Capita Income	\$31,999	\$26,513	\$28,065
2016-2021 Annual Rate	2.18%	1.89%	2.01%

Current median household income is \$43,834 in the area, compared to \$54,149 for all U.S. households. Median household income is projected to be \$50,477 in five years, compared to \$59,476 for all U.S. households

Current average household income is \$57,831 in this area, compared to \$77,008 for all U.S. households. Average household income is projected to be \$64,004 in five years, compared to \$84,021 for all U.S. households

Current per capita income is \$25,409 in the area, compared to the U.S. per capita income of \$29,472. The per capita income is projected to be \$28,065 in five years, compared to \$32,025 for all U.S. households

Housing			
2000 Total Housing Units	2,591	9,537	17,835
2000 Owner Occupied Housing Units	1,337	4,545	9,954
2000 Renter Occupied Housing Units	1,068	4,116	6,563
2000 Vacant Housing Units	186	876	1,318
2010 Total Housing Units	2,735	9,861	18,922
2010 Owner Occupied Housing Units	1,297	4,461	10,022
2010 Renter Occupied Housing Units	1,088	4,044	6,682
2010 Vacant Housing Units	350	1,356	2,218
2016 Total Housing Units	2,759	9,998	19,336
2016 Owner Occupied Housing Units	1,213	4,240	9,654
2016 Renter Occupied Housing Units	1,202	4,478	7,487
2016 Vacant Housing Units	344	1,280	2,195
2021 Total Housing Units	2,799	10,162	19,739
2021 Owner Occupied Housing Units	1,213	4,329	9,837
2021 Renter Occupied Housing Units	1,234	4,573	7,681
2021 Vacant Housing Units	352	1,260	2,221

Currently, 49.9% of the 19,336 housing units in the area are owner occupied; 38.7%, renter occupied; and 11.4% are vacant. Currently, in the U.S., 55.4% of the housing units in the area are owner occupied; 32.9% are renter occupied; and 11.7% are vacant. In 2010, there were 18,922 housing units in the area - 53.0% owner occupied, 35.3% renter occupied, and 11.7% vacant. The annual rate of change in housing units since 2010 is 0.97%. Median home value in the area is \$139,794, compared to a median home value of \$198,891 for the U.S. In five years, median value is projected to change by 3.31% annually to \$164,485.

Data Note: Income is expressed in current dollars

Source: U.S. Census Bureau, Census 2010 Summary File 1. Esri forecasts for 2016 and 2021. Esri converted Census 2000 data into 2010 geography.



Market Profile

970 Louisville Rd, Frankfort, Kentucky, 40601
Rings: 1, 3, 5 mile radii

Prepared by Esri
Latitude: 38.18100
Longitude: -84.89369

	1 mile	3 miles	5 miles
Population Summary			
2000 Total Population	4,938	19,602	38,736
2010 Total Population	5,065	19,672	39,271
2016 Total Population	5,123	20,054	40,120
2016 Group Quarters	141	1,622	1,880
2021 Total Population	5,186	20,455	40,960
2016-2021 Annual Rate	0.24%	0.40%	0.42%
Household Summary			
2000 Households	2,405	8,661	16,517
2000 Average Household Size	2.02	2.09	2.24
2010 Households	2,385	8,505	16,704
2010 Average Household Size	2.06	2.11	2.23
2016 Households	2,415	8,718	17,141
2016 Average Household Size	2.06	2.11	2.23
2021 Households	2,447	8,902	17,518
2021 Average Household Size	2.06	2.12	2.23
2016-2021 Annual Rate	0.26%	0.42%	0.44%
2010 Families	1,234	4,605	9,927
2010 Average Family Size	2.81	2.80	2.85
2016 Families	1,217	4,626	10,009
2016 Average Family Size	2.84	2.83	2.87
2021 Families	1,216	4,677	10,142
2021 Average Family Size	2.85	2.84	2.87
2016-2021 Annual Rate	-0.02%	0.22%	0.26%
Housing Unit Summary			
2000 Housing Units	2,591	9,537	17,835
Owner Occupied Housing Units	51.6%	47.7%	55.8%
Renter Occupied Housing Units	41.2%	43.2%	36.8%
Vacant Housing Units	7.2%	9.2%	7.4%
2010 Housing Units	2,735	9,861	18,922
Owner Occupied Housing Units	47.4%	45.2%	53.0%
Renter Occupied Housing Units	39.8%	41.0%	35.3%
Vacant Housing Units	12.8%	13.8%	11.7%
2016 Housing Units	2,759	9,998	19,336
Owner Occupied Housing Units	44.0%	42.4%	49.9%
Renter Occupied Housing Units	43.6%	44.8%	38.7%
Vacant Housing Units	12.5%	12.8%	11.4%
2021 Housing Units	2,799	10,162	19,739
Owner Occupied Housing Units	43.3%	42.6%	49.8%
Renter Occupied Housing Units	44.1%	45.0%	38.9%
Vacant Housing Units	12.6%	12.4%	11.3%
Median Household Income			
2016	\$42,880	\$39,023	\$43,834
2021	\$50,664	\$44,254	\$50,477
Median Home Value			
2016	\$164,818	\$137,050	\$139,794
2021	\$180,537	\$162,071	\$164,485
Per Capita Income			
2016	\$28,725	\$24,142	\$25,409
2021	\$31,999	\$26,513	\$28,065
Median Age			
2010	42.5	38.2	38.9
2016	43.6	39.4	40.1
2021	44.0	40.1	40.7

Data Note: Household population includes persons not residing in group quarters. Average Household Size is the household population divided by total households. Persons in families include the householder and persons related to the householder by birth, marriage, or adoption. Per Capita Income represents the income received by all persons aged 15 years and over divided by the total population.

Source: U.S. Census Bureau, Census 2010 Summary File 1. Esri forecasts for 2016 and 2021 Esri converted Census 2000 data into 2010 geography.



Market Profile

970 Louisville Rd, Frankfort, Kentucky, 40601
Rings: 1, 3, 5 mile radii

Prepared by Esri
Latitude: 38.18100
Longitude: -84.89369

	1 mile	3 miles	5 miles
2016 Households by Income			
Household Income Base	2,415	8,718	17,141
<\$15,000	16.1%	19.5%	15.4%
\$15,000 - \$24,999	11.9%	13.8%	12.5%
\$25,000 - \$34,999	12.5%	11.5%	11.3%
\$35,000 - \$49,999	15.7%	15.3%	16.2%
\$50,000 - \$74,999	16.5%	16.0%	17.5%
\$75,000 - \$99,999	9.2%	9.9%	11.3%
\$100,000 - \$149,999	12.9%	10.7%	11.9%
\$150,000 - \$199,999	3.5%	2.1%	2.6%
\$200,000+	1.7%	1.2%	1.3%
Average Household Income	\$59,474	\$53,290	\$57,831
2021 Households by Income			
Household Income Base	2,447	8,902	17,518
<\$15,000	16.3%	19.8%	15.6%
\$15,000 - \$24,999	10.2%	12.0%	10.8%
\$25,000 - \$34,999	8.0%	7.8%	7.6%
\$35,000 - \$49,999	14.8%	14.9%	15.4%
\$50,000 - \$74,999	18.3%	17.1%	18.6%
\$75,000 - \$99,999	11.0%	11.8%	13.3%
\$100,000 - \$149,999	15.2%	12.6%	13.9%
\$150,000 - \$199,999	4.4%	2.6%	3.3%
\$200,000+	1.8%	1.2%	1.4%
Average Household Income	\$66,317	\$58,807	\$64,004
2016 Owner Occupied Housing Units by Value			
Total	1,213	4,240	9,654
<\$50,000	1.3%	5.2%	3.7%
\$50,000 - \$99,999	7.2%	19.1%	18.1%
\$100,000 - \$149,999	33.5%	34.7%	35.4%
\$150,000 - \$199,999	27.1%	17.5%	17.3%
\$200,000 - \$249,999	11.4%	9.7%	10.7%
\$250,000 - \$299,999	11.8%	6.4%	6.2%
\$300,000 - \$399,999	3.9%	4.7%	5.1%
\$400,000 - \$499,999	2.1%	1.6%	1.7%
\$500,000 - \$749,999	1.7%	0.8%	0.7%
\$750,000 - \$999,999	0.0%	0.2%	0.8%
\$1,000,000 +	0.0%	0.1%	0.2%
Average Home Value	\$187,057	\$160,929	\$169,942
2021 Owner Occupied Housing Units by Value			
Total	1,213	4,329	9,837
<\$50,000	0.7%	4.2%	2.8%
\$50,000 - \$99,999	2.6%	10.3%	9.5%
\$100,000 - \$149,999	24.6%	29.4%	30.5%
\$150,000 - \$199,999	36.1%	25.6%	25.0%
\$200,000 - \$249,999	15.3%	14.6%	15.6%
\$250,000 - \$299,999	14.0%	8.6%	8.4%
\$300,000 - \$399,999	3.5%	5.1%	5.1%
\$400,000 - \$499,999	1.7%	1.4%	1.5%
\$500,000 - \$749,999	1.3%	0.7%	0.6%
\$750,000 - \$999,999	0.0%	0.1%	0.7%
\$1,000,000 +	0.0%	0.1%	0.2%
Average Home Value	\$197,589	\$177,644	\$185,501

Data Note: Income represents the preceding year, expressed in current dollars. Household income includes wage and salary earnings, interest dividends, net rents, pensions, SSI and welfare payments, child support, and alimony.

Source: U.S. Census Bureau, Census 2010 Summary File 1. Esri forecasts for 2016 and 2021 Esri converted Census 2000 data into 2010 geography.



Market Profile

970 Louisville Rd, Frankfort, Kentucky, 40601
 Rings: 1, 3, 5 mile radii

Prepared by Esri
 Latitude: 38.18100
 Longitude: -84.89369

	1 mile	3 miles	5 miles
2010 Population by Age			
Total	5,066	19,670	39,270
0 - 4	5.7%	5.8%	6.1%
5 - 9	5.9%	5.7%	6.1%
10 - 14	5.1%	5.1%	5.7%
15 - 24	11.5%	15.8%	14.0%
25 - 34	12.1%	13.4%	13.0%
35 - 44	12.8%	12.8%	12.9%
45 - 54	13.8%	14.1%	14.6%
55 - 64	14.2%	12.9%	13.3%
65 - 74	8.8%	7.5%	7.7%
75 - 84	6.7%	4.6%	4.6%
85 +	3.5%	2.3%	1.9%
18 +	80.0%	80.2%	78.6%
2016 Population by Age			
Total	5,121	20,053	40,118
0 - 4	5.3%	5.4%	5.7%
5 - 9	5.3%	5.4%	5.8%
10 - 14	5.5%	5.2%	5.7%
15 - 24	10.8%	15.0%	13.3%
25 - 34	12.9%	13.6%	13.2%
35 - 44	11.9%	12.2%	12.3%
45 - 54	12.5%	12.7%	13.3%
55 - 64	14.3%	13.4%	13.8%
65 - 74	11.0%	9.7%	9.9%
75 - 84	6.7%	4.8%	4.8%
85 +	3.7%	2.5%	2.2%
18 +	80.9%	81.0%	79.5%
2021 Population by Age			
Total	5,185	20,454	40,959
0 - 4	5.3%	5.3%	5.6%
5 - 9	5.1%	5.3%	5.7%
10 - 14	5.2%	5.2%	5.7%
15 - 24	11.2%	14.8%	13.0%
25 - 34	12.9%	13.4%	12.9%
35 - 44	11.4%	11.9%	12.4%
45 - 54	11.8%	11.9%	12.2%
55 - 64	13.1%	12.9%	13.4%
65 - 74	12.8%	11.2%	11.4%
75 - 84	7.2%	5.6%	5.5%
85 +	3.9%	2.6%	2.3%
18 +	81.1%	81.2%	79.7%
2010 Population by Sex			
Males	2,331	9,478	18,873
Females	2,734	10,194	20,398
2016 Population by Sex			
Males	2,367	9,695	19,349
Females	2,756	10,360	20,771
2021 Population by Sex			
Males	2,414	9,944	19,849
Females	2,772	10,510	21,111

Source: U.S. Census Bureau, Census 2010 Summary File 1. Esri forecasts for 2016 and 2021 Esri converted Census 2000 data into 2010 geography.



Market Profile

970 Louisville Rd, Frankfort, Kentucky, 40601
Rings: 1, 3, 5 mile radii

Prepared by Esri
Latitude: 38.18100
Longitude: -84.89369

	1 mile	3 miles	5 miles
2010 Population by Race/Ethnicity			
Total	5,065	19,672	39,271
White Alone	87.1%	80.4%	82.0%
Black Alone	8.1%	14.2%	12.3%
American Indian Alone	0.3%	0.3%	0.2%
Asian Alone	1.5%	1.8%	1.5%
Pacific Islander Alone	0.0%	0.0%	0.0%
Some Other Race Alone	0.9%	0.9%	1.5%
Two or More Races	2.0%	2.4%	2.4%
Hispanic Origin	3.0%	2.3%	3.1%
Diversity Index	27.8	36.4	35.4
2016 Population by Race/Ethnicity			
Total	5,123	20,053	40,120
White Alone	85.1%	78.3%	79.8%
Black Alone	8.9%	15.0%	13.2%
American Indian Alone	0.5%	0.4%	0.3%
Asian Alone	2.1%	2.5%	2.1%
Pacific Islander Alone	0.0%	0.0%	0.0%
Some Other Race Alone	1.1%	1.1%	1.7%
Two or More Races	2.3%	2.7%	2.8%
Hispanic Origin	3.5%	2.7%	3.6%
Diversity Index	31.7	39.7	39.1
2021 Population by Race/Ethnicity			
Total	5,186	20,455	40,960
White Alone	83.2%	76.3%	77.8%
Black Alone	9.6%	15.6%	14.0%
American Indian Alone	0.6%	0.4%	0.3%
Asian Alone	2.8%	3.3%	2.8%
Pacific Islander Alone	0.0%	0.0%	0.0%
Some Other Race Alone	1.2%	1.2%	1.9%
Two or More Races	2.6%	3.1%	3.2%
Hispanic Origin	4.0%	3.1%	4.1%
Diversity Index	35.2	42.8	42.4
2010 Population by Relationship and Household Type			
Total	5,065	19,672	39,271
In Households	97.0%	91.1%	94.8%
In Family Households	70.7%	67.9%	74.3%
Householder	24.6%	23.2%	25.3%
Spouse	16.2%	14.7%	16.9%
Child	25.0%	25.2%	27.1%
Other relative	2.6%	2.5%	2.6%
Nonrelative	2.3%	2.2%	2.3%
In Nonfamily Households	26.3%	23.2%	20.6%
In Group Quarters	3.0%	8.9%	5.2%
Institutionalized Population	3.0%	3.4%	1.9%
Noninstitutionalized Population	0.0%	5.5%	3.2%

Data Note: Persons of Hispanic Origin may be of any race. The Diversity Index measures the probability that two people from the same area will be from different race/ethnic groups.

Source: U.S. Census Bureau, Census 2010 Summary File 1. Esri forecasts for 2016 and 2021 Esri converted Census 2000 data into 2010 geography.



Market Profile

970 Louisville Rd, Frankfort, Kentucky, 40601
Rings: 1, 3, 5 mile radii

Prepared by Esri
Latitude: 38.18100
Longitude: -84.89369

	1 mile	3 miles	5 miles
2016 Population 25+ by Educational Attainment			
Total	3,746	13,836	27,885
Less than 9th Grade	3.1%	5.7%	4.8%
9th - 12th Grade, No Diploma	11.6%	8.3%	7.8%
High School Graduate	21.5%	21.9%	22.8%
GED/Alternative Credential	6.0%	10.0%	9.4%
Some College, No Degree	22.7%	21.5%	22.8%
Associate Degree	2.9%	3.8%	4.6%
Bachelor's Degree	20.6%	18.6%	17.4%
Graduate/Professional Degree	11.7%	10.2%	10.4%
2016 Population 15+ by Marital Status			
Total	4,296	16,847	33,208
Never Married	29.8%	35.3%	32.2%
Married	39.7%	38.7%	44.8%
Widowed	9.9%	7.1%	5.7%
Divorced	20.6%	19.0%	17.4%
2016 Civilian Population 16+ in Labor Force			
Civilian Employed	89.8%	89.3%	91.5%
Civilian Unemployed	10.2%	10.7%	8.5%
2016 Employed Population 16+ by Industry			
Total	2,125	8,031	16,925
Agriculture/Mining	0.9%	0.6%	0.9%
Construction	4.9%	4.2%	5.5%
Manufacturing	10.5%	10.3%	11.0%
Wholesale Trade	0.4%	0.8%	0.8%
Retail Trade	10.6%	10.1%	10.5%
Transportation/Utilities	3.3%	3.7%	3.4%
Information	1.2%	1.2%	1.2%
Finance/Insurance/Real Estate	4.2%	4.1%	3.7%
Services	36.4%	43.0%	41.6%
Public Administration	27.5%	22.1%	21.4%
2016 Employed Population 16+ by Occupation			
Total	2,127	8,031	16,926
White Collar	60.6%	65.3%	61.6%
Management/Business/Financial	19.8%	17.8%	17.1%
Professional	14.8%	17.8%	17.2%
Sales	7.8%	7.7%	7.3%
Administrative Support	18.2%	21.9%	20.1%
Services	16.0%	14.3%	15.6%
Blue Collar	23.5%	20.5%	22.8%
Farming/Forestry/Fishing	0.2%	0.5%	0.5%
Construction/Extraction	3.8%	3.5%	5.0%
Installation/Maintenance/Repair	5.9%	3.2%	2.4%
Production	10.8%	8.1%	10.0%
Transportation/Material Moving	2.8%	5.2%	5.1%
2010 Population By Urban/ Rural Status			
Total Population	5,065	19,672	39,271
Population Inside Urbanized Area	0.0%	0.0%	0.0%
Population Inside Urbanized Cluster	99.1%	87.7%	85.1%
Rural Population	0.9%	12.3%	14.9%

Source: U.S. Census Bureau, Census 2010 Summary File 1. Esri forecasts for 2016 and 2021 Esri converted Census 2000 data into 2010 geography.



Market Profile

970 Louisville Rd, Frankfort, Kentucky, 40601
Rings: 1, 3, 5 mile radii

Prepared by Esri
Latitude: 38.18100
Longitude: -84.89369

	1 mile	3 miles	5 miles
2010 Households by Type			
Total	2,385	8,505	16,704
Households with 1 Person	42.2%	39.2%	34.1%
Households with 2+ People	57.8%	60.8%	65.9%
Family Households	51.7%	54.1%	59.4%
Husband-wife Families	34.1%	34.5%	39.8%
With Related Children	12.6%	13.4%	15.6%
Other Family (No Spouse Present)	17.6%	19.6%	19.7%
Other Family with Male Householder	4.2%	4.8%	4.8%
With Related Children	2.8%	3.0%	3.0%
Other Family with Female Householder	13.4%	14.8%	14.9%
With Related Children	9.3%	10.1%	10.1%
Nonfamily Households	6.1%	6.6%	6.5%
All Households with Children	25.1%	26.9%	29.1%
Multigenerational Households	2.5%	2.8%	2.9%
Unmarried Partner Households	6.4%	7.4%	7.3%
Male-female	5.7%	6.7%	6.6%
Same-sex	0.7%	0.6%	0.7%
2010 Households by Size			
Total	2,387	8,505	16,704
1 Person Household	42.1%	39.2%	34.1%
2 Person Household	31.8%	32.3%	34.2%
3 Person Household	13.3%	14.1%	15.5%
4 Person Household	8.0%	8.8%	10.2%
5 Person Household	3.1%	3.8%	4.1%
6 Person Household	1.0%	1.1%	1.3%
7 + Person Household	0.6%	0.6%	0.6%
2010 Households by Tenure and Mortgage Status			
Total	2,385	8,505	16,704
Owner Occupied	54.4%	52.5%	60.0%
Owned with a Mortgage/Loan	36.7%	36.6%	42.6%
Owned Free and Clear	17.7%	15.8%	17.4%
Renter Occupied	45.6%	47.5%	40.0%
2010 Housing Units By Urban/ Rural Status			
Total Housing Units	2,735	9,861	18,922
Housing Units Inside Urbanized Area	0.0%	0.0%	0.0%
Housing Units Inside Urbanized Cluster	99.0%	88.7%	86.7%
Rural Housing Units	1.0%	11.3%	13.3%

Data Note: Households with children include any households with people under age 18, related or not. Multigenerational households are families with 3 or more parent-child relationships. Unmarried partner households are usually classified as nonfamily households unless there is another member of the household related to the householder. Multigenerational and unmarried partner households are reported only to the tract level. Esri estimated block group data, which is used to estimate polygons or non-standard geography.

Source: U.S. Census Bureau, Census 2010 Summary File 1. Esri forecasts for 2016 and 2021 Esri converted Census 2000 data into 2010 geography.



Market Profile

970 Louisville Rd, Frankfort, Kentucky, 40601
Rings: 1, 3, 5 mile radii

Prepared by Esri
Latitude: 38.18100
Longitude: -84.89369

	1 mile	3 miles	5 miles
Top 3 Tapestry Segments			
1.	Old and Newcomers (8F)	Old and Newcomers (8F)	Midlife Constants (5E)
2.	In Style (5B)	Midlife Constants (5E)	Old and Newcomers (8F)
3.	Midlife Constants (5E)	Set to Impress (11D)	In Style (5B)
2016 Consumer Spending			
Apparel & Services: Total \$	\$3,777,533	\$12,254,962	\$25,818,149
Average Spent	\$1,564.20	\$1,405.71	\$1,506.22
Spending Potential Index	78	70	75
Education: Total \$	\$2,638,935	\$8,477,498	\$17,774,223
Average Spent	\$1,092.73	\$972.41	\$1,036.94
Spending Potential Index	77	69	73
Entertainment/Recreation: Total \$	\$5,462,036	\$17,768,750	\$37,805,632
Average Spent	\$2,261.71	\$2,038.17	\$2,205.57
Spending Potential Index	78	70	76
Food at Home: Total \$	\$9,556,974	\$31,717,338	\$66,208,789
Average Spent	\$3,957.34	\$3,638.14	\$3,862.60
Spending Potential Index	79	73	78
Food Away from Home: Total \$	\$5,856,000	\$19,049,384	\$40,120,570
Average Spent	\$2,424.84	\$2,185.06	\$2,340.62
Spending Potential Index	78	71	76
Health Care: Total \$	\$10,017,145	\$32,852,887	\$70,424,558
Average Spent	\$4,147.89	\$3,768.40	\$4,108.54
Spending Potential Index	78	71	78
HH Furnishings & Equipment: Total \$	\$3,320,052	\$10,717,892	\$22,875,937
Average Spent	\$1,374.76	\$1,229.40	\$1,334.57
Spending Potential Index	78	70	76
Personal Care Products & Services: Total \$	\$1,384,744	\$4,461,047	\$9,463,983
Average Spent	\$573.39	\$511.71	\$552.13
Spending Potential Index	78	70	75
Shelter: Total \$	\$29,523,777	\$95,353,940	\$200,046,304
Average Spent	\$12,225.17	\$10,937.59	\$11,670.63
Spending Potential Index	78	70	75
Support Payments/Cash Contributions/Gifts in Kind: Total \$	\$4,425,958	\$14,272,763	\$30,821,732
Average Spent	\$1,832.69	\$1,637.16	\$1,798.13
Spending Potential Index	79	71	78
Travel: Total \$	\$3,396,729	\$10,687,092	\$23,305,630
Average Spent	\$1,406.51	\$1,225.87	\$1,359.64
Spending Potential Index	76	66	73
Vehicle Maintenance & Repairs: Total \$	\$1,960,000	\$6,416,875	\$13,603,745
Average Spent	\$811.59	\$736.05	\$793.64
Spending Potential Index	78	71	77

Data Note: Consumer spending shows the amount spent on a variety of goods and services by households that reside in the area. Expenditures are shown by broad budget categories that are not mutually exclusive. Consumer spending does not equal business revenue. Total and Average Amount Spent Per Household represent annual figures. The Spending Potential Index represents the amount spent in the area relative to a national average of 100.

Source: Consumer Spending data are derived from the 2013 and 2014 Consumer Expenditure Surveys, Bureau of Labor Statistics. Esri.

Source: U.S. Census Bureau, Census 2010 Summary File 1. Esri forecasts for 2016 and 2021 Esri converted Census 2000 data into 2010 geography.



2010 Census Profile

970 Louisville Rd, Frankfort, Kentucky, 40601
Ring: 1 mile radius

Prepared by Esri
Latitude: 38.18100
Longitude: -84.89369

	2000	2010	2000-2010 Annual Rate
Population	4,938	5,065	0.25%
Households	2,405	2,385	-0.08%
Housing Units	2,591	2,735	0.54%
Population by Race			
		Number	Percent
Total		5,065	100.0%
Population Reporting One Race		4,965	98.0%
White		4,414	87.1%
Black		408	8.1%
American Indian		17	0.3%
Asian		78	1.5%
Pacific Islander		0	0.0%
Some Other Race		48	0.9%
Population Reporting Two or More Races		100	2.0%
Total Hispanic Population		151	3.0%
Population by Sex			
Male		2,331	46.0%
Female		2,734	54.0%
Population by Age			
Total		5,066	100.0%
Age 0 - 4		287	5.7%
Age 5 - 9		301	5.9%
Age 10 - 14		260	5.1%
Age 15 - 19		267	5.3%
Age 20 - 24		314	6.2%
Age 25 - 29		312	6.2%
Age 30 - 34		299	5.9%
Age 35 - 39		330	6.5%
Age 40 - 44		320	6.3%
Age 45 - 49		341	6.7%
Age 50 - 54		357	7.0%
Age 55 - 59		384	7.6%
Age 60 - 64		334	6.6%
Age 65 - 69		238	4.7%
Age 70 - 74		206	4.1%
Age 75 - 79		174	3.4%
Age 80 - 84		163	3.2%
Age 85+		177	3.5%
Age 18+		4,051	80.0%
Age 65+		958	18.9%

Data Note: Hispanic population can be of any race. Census 2010 medians are computed from reported data distributions.
Source: U.S. Census Bureau, Census 2010 Summary File 1. Esri converted Census 2000 data into 2010 geography.



2010 Census Profile

970 Louisville Rd, Frankfort, Kentucky, 40601
Ring: 1 mile radius

Prepared by Esri
Latitude: 38.18100
Longitude: -84.89369

Households by Type		
Total	2,385	100.0%
Households with 1 Person	1,006	42.2%
Households with 2+ People	1,379	57.8%
Family Households	1,234	51.7%
Husband-wife Families	814	34.1%
With Own Children	282	11.8%
Other Family (No Spouse Present)	419	17.6%
With Own Children	249	10.4%
Nonfamily Households	145	6.1%
All Households with Children	598	25.1%
Multigenerational Households	59	2.5%
Unmarried Partner Households	152	6.4%
Male-female	135	5.7%
Same-sex	17	0.7%
Average Household Size	2.06	
Family Households by Size		
Total	1,235	100.0%
2 People	630	51.0%
3 People	305	24.7%
4 People	188	15.2%
5 People	72	5.8%
6 People	25	2.0%
7+ People	15	1.2%
Average Family Size	2.81	
Nonfamily Households by Size		
Total	1,152	100.0%
1 Person	1,006	87.3%
2 People	129	11.2%
3 People	13	1.1%
4 People	3	0.3%
5 People	1	0.1%
6 People	0	0.0%
7+ People	0	0.0%
Average Nonfamily Size	1.16	
Population by Relationship and Household Type		
Total	5,065	100.0%
In Households	4,913	97.0%
In Family Households	3,580	70.7%
Householder	1,246	24.6%
Spouse	822	16.2%
Child	1,265	25.0%
Other relative	131	2.6%
Nonrelative	115	2.3%
In Nonfamily Households	1,333	26.3%
In Group Quarters	152	3.0%
Institutionalized Population	150	3.0%
Noninstitutionalized Population	2	0.0%

Data Note: Households with children include any households with people under age 18, related or not. Multigenerational households are families with 3 or more parent-child relationships. Unmarried partner households are usually classified as nonfamily households unless there is another member of the household related to the householder. Multigenerational and unmarried partner households are reported only to the tract level. Esri estimated block group data, which is used to estimate polygons or non-standard geography. Average family size excludes nonrelatives.

Source: U.S. Census Bureau, Census 2010 Summary File 1.



2010 Census Profile

970 Louisville Rd, Frankfort, Kentucky, 40601
Ring: 1 mile radius

Prepared by Esri
Latitude: 38.18100
Longitude: -84.89369

Family Households by Age of Householder		
Total	1,233	100.0%
Householder Age 15 - 44	503	40.8%
Householder Age 45 - 54	228	18.5%
Householder Age 55 - 64	235	19.1%
Householder Age 65 - 74	133	10.8%
Householder Age 75+	134	10.9%

Nonfamily Households by Age of Householder		
Total	1,152	100.0%
Householder Age 15 - 44	377	32.7%
Householder Age 45 - 54	227	19.7%
Householder Age 55 - 64	228	19.8%
Householder Age 65 - 74	148	12.8%
Householder Age 75+	172	14.9%

Households by Race of Householder		
Total	2,385	100.0%
Householder is White Alone	2,113	88.6%
Householder is Black Alone	201	8.4%
Householder is American Indian Alone	7	0.3%
Householder is Asian Alone	29	1.2%
Householder is Pacific Islander Alone	0	0.0%
Householder is Some Other Race Alone	9	0.4%
Householder is Two or More Races	26	1.1%
Households with Hispanic Householder	40	1.7%

Husband-wife Families by Race of Householder		
Total	815	100.0%
Householder is White Alone	749	91.9%
Householder is Black Alone	37	4.5%
Householder is American Indian Alone	2	0.2%
Householder is Asian Alone	18	2.2%
Householder is Pacific Islander Alone	0	0.0%
Householder is Some Other Race Alone	5	0.6%
Householder is Two or More Races	4	0.5%
Husband-wife Families with Hispanic Householder	16	2.0%

Other Families (No Spouse) by Race of Householder		
Total	419	100.0%
Householder is White Alone	364	86.9%
Householder is Black Alone	40	9.5%
Householder is American Indian Alone	3	0.7%
Householder is Asian Alone	2	0.5%
Householder is Pacific Islander Alone	0	0.0%
Householder is Some Other Race Alone	3	0.7%
Householder is Two or More Races	7	1.7%
Other Families with Hispanic Householder	9	2.1%

Nonfamily Households by Race of Householder		
Total	1,151	100.0%
Householder is White Alone	1,000	86.9%
Householder is Black Alone	123	10.7%
Householder is American Indian Alone	2	0.2%
Householder is Asian Alone	10	0.9%
Householder is Pacific Islander Alone	0	0.0%
Householder is Some Other Race Alone	1	0.1%
Householder is Two or More Races	15	1.3%
Nonfamily Households with Hispanic Householder	15	1.3%

Source: U.S. Census Bureau, Census 2010 Summary File 1.



2010 Census Profile

970 Louisville Rd, Frankfort, Kentucky, 40601
Ring: 1 mile radius

Prepared by Esri
Latitude: 38.18100
Longitude: -84.89369

Total Housing Units by Occupancy

Total	2,713	100.0%
Occupied Housing Units	2,385	87.9%
Vacant Housing Units		
For Rent	198	7.3%
Rented, not Occupied	13	0.5%
For Sale Only	49	1.8%
Sold, not Occupied	10	0.4%
For Seasonal/Recreational/Occasional Use	27	1.0%
For Migrant Workers	0	0.0%
Other Vacant	31	1.1%
Total Vacancy Rate	12.8%	

Households by Tenure and Mortgage Status

Total	2,385	100.0%
Owner Occupied	1,297	54.4%
Owned with a Mortgage/Loan	876	36.7%
Owned Free and Clear	421	17.7%
Average Household Size	2.17	
Renter Occupied	1,088	45.6%
Average Household Size	1.93	

Owner-occupied Housing Units by Race of Householder

Total	1,296	100.0%
Householder is White Alone	1,230	94.9%
Householder is Black Alone	44	3.4%
Householder is American Indian Alone	0	0.0%
Householder is Asian Alone	10	0.8%
Householder is Pacific Islander Alone	0	0.0%
Householder is Some Other Race Alone	2	0.2%
Householder is Two or More Races	10	0.8%
Owner-occupied Housing Units with Hispanic Householder	12	0.9%

Renter-occupied Housing Units by Race of Householder

Total	1,089	100.0%
Householder is White Alone	884	81.2%
Householder is Black Alone	157	14.4%
Householder is American Indian Alone	7	0.6%
Householder is Asian Alone	19	1.7%
Householder is Pacific Islander Alone	0	0.0%
Householder is Some Other Race Alone	6	0.6%
Householder is Two or More Races	16	1.5%
Renter-occupied Housing Units with Hispanic Householder	28	2.6%

Average Household Size by Race/Hispanic Origin of Householder

Householder is White Alone	2.05
Householder is Black Alone	1.99
Householder is American Indian Alone	2.29
Householder is Asian Alone	2.76
Householder is Pacific Islander Alone	0.00
Householder is Some Other Race Alone	4.00
Householder is Two or More Races	2.04
Householder is Hispanic	3.28

Source: U.S. Census Bureau, Census 2010 Summary File 1.



2010 Census Profile

970 Louisville Rd, Frankfort, Kentucky, 40601
Ring: 3 mile radius

Prepared by Esri
Latitude: 38.18100
Longitude: -84.89369

	2000	2010	2000-2010 Annual Rate
Population	19,602	19,672	0.04%
Households	8,661	8,505	-0.18%
Housing Units	9,537	9,861	0.33%
Population by Race			
		Number	Percent
Total		19,672	100.0%
Population Reporting One Race		19,205	97.6%
White		15,808	80.4%
Black		2,797	14.2%
American Indian		55	0.3%
Asian		361	1.8%
Pacific Islander		3	0.0%
Some Other Race		181	0.9%
Population Reporting Two or More Races		467	2.4%
Total Hispanic Population		460	2.3%
Population by Sex			
Male		9,478	48.2%
Female		10,194	51.8%
Population by Age			
Total		19,670	100.0%
Age 0 - 4		1,137	5.8%
Age 5 - 9		1,125	5.7%
Age 10 - 14		1,002	5.1%
Age 15 - 19		1,524	7.7%
Age 20 - 24		1,593	8.1%
Age 25 - 29		1,381	7.0%
Age 30 - 34		1,261	6.4%
Age 35 - 39		1,284	6.5%
Age 40 - 44		1,239	6.3%
Age 45 - 49		1,373	7.0%
Age 50 - 54		1,391	7.1%
Age 55 - 59		1,343	6.8%
Age 60 - 64		1,185	6.0%
Age 65 - 69		828	4.2%
Age 70 - 74		638	3.2%
Age 75 - 79		503	2.6%
Age 80 - 84		407	2.1%
Age 85+		457	2.3%
Age 18+		15,783	80.2%
Age 65+		2,833	14.4%

Data Note: Hispanic population can be of any race. Census 2010 medians are computed from reported data distributions.
Source: U.S. Census Bureau, Census 2010 Summary File 1. Esri converted Census 2000 data into 2010 geography.



2010 Census Profile

970 Louisville Rd, Frankfort, Kentucky, 40601
Ring: 3 mile radius

Prepared by Esri
Latitude: 38.18100
Longitude: -84.89369

Households by Type		
Total	8,505	100.0%
Households with 1 Person	3,337	39.2%
Households with 2+ People	5,168	60.8%
Family Households	4,605	54.1%
Husband-wife Families	2,937	34.5%
With Own Children	1,048	12.3%
Other Family (No Spouse Present)	1,667	19.6%
With Own Children	959	11.3%
Nonfamily Households	563	6.6%
All Households with Children	2,285	26.9%
Multigenerational Households	237	2.8%
Unmarried Partner Households	627	7.4%
Male-female	573	6.7%
Same-sex	54	0.6%
Average Household Size	2.11	
Family Households by Size		
Total	4,604	100.0%
2 People	2,254	49.0%
3 People	1,148	24.9%
4 People	738	16.0%
5 People	319	6.9%
6 People	95	2.1%
7+ People	50	1.1%
Average Family Size	2.80	
Nonfamily Households by Size		
Total	3,901	100.0%
1 Person	3,337	85.5%
2 People	491	12.6%
3 People	54	1.4%
4 People	12	0.3%
5 People	4	0.1%
6 People	1	0.0%
7+ People	2	0.1%
Average Nonfamily Size	1.17	
Population by Relationship and Household Type		
Total	19,672	100.0%
In Households	17,922	91.1%
In Family Households	13,356	67.9%
Householder	4,566	23.2%
Spouse	2,897	14.7%
Child	4,958	25.2%
Other relative	493	2.5%
Nonrelative	442	2.2%
In Nonfamily Households	4,566	23.2%
In Group Quarters	1,750	8.9%
Institutionalized Population	675	3.4%
Noninstitutionalized Population	1,075	5.5%

Data Note: Households with children include any households with people under age 18, related or not. Multigenerational households are families with 3 or more parent-child relationships. Unmarried partner households are usually classified as nonfamily households unless there is another member of the household related to the householder. Multigenerational and unmarried partner households are reported only to the tract level. Esri estimated block group data, which is used to estimate polygons or non-standard geography. Average family size excludes nonrelatives.

Source: U.S. Census Bureau, Census 2010 Summary File 1.



2010 Census Profile

970 Louisville Rd, Frankfort, Kentucky, 40601
Ring: 3 mile radius

Prepared by Esri
Latitude: 38.18100
Longitude: -84.89369

Family Households by Age of Householder		
Total	4,603	100.0%
Householder Age 15 - 44	1,964	42.7%
Householder Age 45 - 54	931	20.2%
Householder Age 55 - 64	855	18.6%
Householder Age 65 - 74	487	10.6%
Householder Age 75+	366	8.0%

Nonfamily Households by Age of Householder		
Total	3,901	100.0%
Householder Age 15 - 44	1,260	32.3%
Householder Age 45 - 54	748	19.2%
Householder Age 55 - 64	769	19.7%
Householder Age 65 - 74	514	13.2%
Householder Age 75+	610	15.6%

Households by Race of Householder		
Total	8,504	100.0%
Householder is White Alone	7,329	86.2%
Householder is Black Alone	879	10.3%
Householder is American Indian Alone	19	0.2%
Householder is Asian Alone	130	1.5%
Householder is Pacific Islander Alone	0	0.0%
Householder is Some Other Race Alone	38	0.4%
Householder is Two or More Races	109	1.3%
Households with Hispanic Householder	120	1.4%

Husband-wife Families by Race of Householder		
Total	2,937	100.0%
Householder is White Alone	2,650	90.2%
Householder is Black Alone	170	5.8%
Householder is American Indian Alone	2	0.1%
Householder is Asian Alone	80	2.7%
Householder is Pacific Islander Alone	0	0.0%
Householder is Some Other Race Alone	15	0.5%
Householder is Two or More Races	20	0.7%
Husband-wife Families with Hispanic Householder	44	1.5%

Other Families (No Spouse) by Race of Householder		
Total	1,667	100.0%
Householder is White Alone	1,368	82.1%
Householder is Black Alone	238	14.3%
Householder is American Indian Alone	6	0.4%
Householder is Asian Alone	12	0.7%
Householder is Pacific Islander Alone	0	0.0%
Householder is Some Other Race Alone	12	0.7%
Householder is Two or More Races	31	1.9%
Other Families with Hispanic Householder	30	1.8%

Nonfamily Households by Race of Householder		
Total	3,901	100.0%
Householder is White Alone	3,311	84.9%
Householder is Black Alone	471	12.1%
Householder is American Indian Alone	11	0.3%
Householder is Asian Alone	38	1.0%
Householder is Pacific Islander Alone	0	0.0%
Householder is Some Other Race Alone	11	0.3%
Householder is Two or More Races	59	1.5%
Nonfamily Households with Hispanic Householder	46	1.2%

Source: U.S. Census Bureau, Census 2010 Summary File 1.



2010 Census Profile

970 Louisville Rd, Frankfort, Kentucky, 40601
Ring: 3 mile radius

Prepared by Esri
Latitude: 38.18100
Longitude: -84.89369

Total Housing Units by Occupancy

Total	9,854	100.0%
Occupied Housing Units	8,505	86.3%
Vacant Housing Units		
For Rent	603	6.1%
Rented, not Occupied	41	0.4%
For Sale Only	334	3.4%
Sold, not Occupied	38	0.4%
For Seasonal/Recreational/Occasional Use	85	0.9%
For Migrant Workers	1	0.0%
Other Vacant	247	2.5%
Total Vacancy Rate	13.8%	

Households by Tenure and Mortgage Status

Total	8,505	100.0%
Owner Occupied	4,461	52.5%
Owned with a Mortgage/Loan	3,113	36.6%
Owned Free and Clear	1,348	15.8%
Average Household Size	2.22	
Renter Occupied	4,044	47.5%
Average Household Size	1.98	

Owner-occupied Housing Units by Race of Householder

Total	4,461	100.0%
Householder is White Alone	4,145	92.9%
Householder is Black Alone	239	5.4%
Householder is American Indian Alone	2	0.0%
Householder is Asian Alone	34	0.8%
Householder is Pacific Islander Alone	0	0.0%
Householder is Some Other Race Alone	9	0.2%
Householder is Two or More Races	32	0.7%
Owner-occupied Housing Units with Hispanic Householder	35	0.8%

Renter-occupied Housing Units by Race of Householder

Total	4,044	100.0%
Householder is White Alone	3,184	78.7%
Householder is Black Alone	640	15.8%
Householder is American Indian Alone	18	0.4%
Householder is Asian Alone	96	2.4%
Householder is Pacific Islander Alone	0	0.0%
Householder is Some Other Race Alone	29	0.7%
Householder is Two or More Races	77	1.9%
Renter-occupied Housing Units with Hispanic Householder	85	2.1%

Average Household Size by Race/Hispanic Origin of Householder

Householder is White Alone	2.09
Householder is Black Alone	2.09
Householder is American Indian Alone	2.05
Householder is Asian Alone	2.60
Householder is Pacific Islander Alone	0.00
Householder is Some Other Race Alone	3.63
Householder is Two or More Races	2.17
Householder is Hispanic	3.03

Source: U.S. Census Bureau, Census 2010 Summary File 1.



2010 Census Profile

970 Louisville Rd, Frankfort, Kentucky, 40601
Ring: 5 mile radius

Prepared by Esri
Latitude: 38.18100
Longitude: -84.89369

	2000	2010	2000-2010 Annual Rate
Population	38,736	39,271	0.14%
Households	16,517	16,704	0.11%
Housing Units	17,835	18,922	0.59%
Population by Race			
		Number	Percent
Total		39,271	100.0%
Population Reporting One Race		38,315	97.6%
White		32,186	82.0%
Black		4,845	12.3%
American Indian		87	0.2%
Asian		607	1.5%
Pacific Islander		8	0.0%
Some Other Race		582	1.5%
Population Reporting Two or More Races		956	2.4%
Total Hispanic Population		1,226	3.1%
Population by Sex			
Male		18,873	48.1%
Female		20,398	51.9%
Population by Age			
Total		39,270	100.0%
Age 0 - 4		2,404	6.1%
Age 5 - 9		2,407	6.1%
Age 10 - 14		2,233	5.7%
Age 15 - 19		2,736	7.0%
Age 20 - 24		2,764	7.0%
Age 25 - 29		2,638	6.7%
Age 30 - 34		2,463	6.3%
Age 35 - 39		2,553	6.5%
Age 40 - 44		2,518	6.4%
Age 45 - 49		2,874	7.3%
Age 50 - 54		2,871	7.3%
Age 55 - 59		2,774	7.1%
Age 60 - 64		2,432	6.2%
Age 65 - 69		1,720	4.4%
Age 70 - 74		1,298	3.3%
Age 75 - 79		1,027	2.6%
Age 80 - 84		794	2.0%
Age 85+		764	1.9%
Age 18+		30,875	78.6%
Age 65+		5,603	14.3%

Data Note: Hispanic population can be of any race. Census 2010 medians are computed from reported data distributions.
Source: U.S. Census Bureau, Census 2010 Summary File 1. Esri converted Census 2000 data into 2010 geography.



2010 Census Profile

970 Louisville Rd, Frankfort, Kentucky, 40601
Ring: 5 mile radius

Prepared by Esri
Latitude: 38.18100
Longitude: -84.89369

Households by Type		
Total	16,704	100.0%
Households with 1 Person	5,696	34.1%
Households with 2+ People	11,008	65.9%
Family Households	9,927	59.4%
Husband-wife Families	6,640	39.8%
With Own Children	2,411	14.4%
Other Family (No Spouse Present)	3,287	19.7%
With Own Children	1,888	11.3%
Nonfamily Households	1,081	6.5%
All Households with Children	4,864	29.1%
Multigenerational Households	481	2.9%
Unmarried Partner Households	1,215	7.3%
Male-female	1,104	6.6%
Same-sex	111	0.7%
Average Household Size	2.23	

Family Households by Size		
Total	9,927	100.0%
2 People	4,784	48.2%
3 People	2,480	25.0%
4 People	1,666	16.8%
5 People	670	6.7%
6 People	222	2.2%
7+ People	105	1.1%
Average Family Size	2.85	

Nonfamily Households by Size		
Total	6,777	100.0%
1 Person	5,696	84.0%
2 People	927	13.7%
3 People	109	1.6%
4 People	32	0.5%
5 People	8	0.1%
6 People	3	0.0%
7+ People	2	0.0%
Average Nonfamily Size	1.19	

Population by Relationship and Household Type		
Total	39,271	100.0%
In Households	37,243	94.8%
In Family Households	29,162	74.3%
Householder	9,928	25.3%
Spouse	6,641	16.9%
Child	10,661	27.1%
Other relative	1,035	2.6%
Nonrelative	896	2.3%
In Nonfamily Households	8,082	20.6%
In Group Quarters	2,028	5.2%
Institutionalized Population	763	1.9%
Noninstitutionalized Population	1,264	3.2%

Data Note: Households with children include any households with people under age 18, related or not. Multigenerational households are families with 3 or more parent-child relationships. Unmarried partner households are usually classified as nonfamily households unless there is another member of the household related to the householder. Multigenerational and unmarried partner households are reported only to the tract level. Esri estimated block group data, which is used to estimate polygons or non-standard geography. Average family size excludes nonrelatives.

Source: U.S. Census Bureau, Census 2010 Summary File 1.



2010 Census Profile

970 Louisville Rd, Frankfort, Kentucky, 40601
Ring: 5 mile radius

Prepared by Esri
Latitude: 38.18100
Longitude: -84.89369

Family Households by Age of Householder		
Total	9,927	100.0%
Householder Age 15 - 44	4,072	41.0%
Householder Age 45 - 54	2,083	21.0%
Householder Age 55 - 64	1,889	19.0%
Householder Age 65 - 74	1,094	11.0%
Householder Age 75+	789	7.9%

Nonfamily Households by Age of Householder		
Total	6,776	100.0%
Householder Age 15 - 44	2,126	31.4%
Householder Age 45 - 54	1,306	19.3%
Householder Age 55 - 64	1,345	19.8%
Householder Age 65 - 74	921	13.6%
Householder Age 75+	1,078	15.9%

Households by Race of Householder		
Total	16,705	100.0%
Householder is White Alone	14,375	86.1%
Householder is Black Alone	1,756	10.5%
Householder is American Indian Alone	38	0.2%
Householder is Asian Alone	209	1.3%
Householder is Pacific Islander Alone	3	0.0%
Householder is Some Other Race Alone	138	0.8%
Householder is Two or More Races	186	1.1%
Households with Hispanic Householder	307	1.8%

Husband-wife Families by Race of Householder		
Total	6,640	100.0%
Householder is White Alone	6,026	90.8%
Householder is Black Alone	374	5.6%
Householder is American Indian Alone	8	0.1%
Householder is Asian Alone	133	2.0%
Householder is Pacific Islander Alone	2	0.0%
Householder is Some Other Race Alone	52	0.8%
Householder is Two or More Races	45	0.7%
Husband-wife Families with Hispanic Householder	131	2.0%

Other Families (No Spouse) by Race of Householder		
Total	3,287	100.0%
Householder is White Alone	2,640	80.3%
Householder is Black Alone	509	15.5%
Householder is American Indian Alone	9	0.3%
Householder is Asian Alone	21	0.6%
Householder is Pacific Islander Alone	0	0.0%
Householder is Some Other Race Alone	47	1.4%
Householder is Two or More Races	61	1.9%
Other Families with Hispanic Householder	87	2.6%

Nonfamily Households by Race of Householder		
Total	6,776	100.0%
Householder is White Alone	5,709	84.3%
Householder is Black Alone	873	12.9%
Householder is American Indian Alone	20	0.3%
Householder is Asian Alone	55	0.8%
Householder is Pacific Islander Alone	1	0.0%
Householder is Some Other Race Alone	38	0.6%
Householder is Two or More Races	80	1.2%
Nonfamily Households with Hispanic Householder	90	1.3%

Source: U.S. Census Bureau, Census 2010 Summary File 1.



2010 Census Profile

970 Louisville Rd, Frankfort, Kentucky, 40601
Ring: 5 mile radius

Prepared by Esri
Latitude: 38.18100
Longitude: -84.89369

Total Housing Units by Occupancy

Total	18,915	100.0%
Occupied Housing Units	16,704	88.3%
Vacant Housing Units		
For Rent	946	5.0%
Rented, not Occupied	54	0.3%
For Sale Only	521	2.8%
Sold, not Occupied	76	0.4%
For Seasonal/Recreational/Occasional Use	137	0.7%
For Migrant Workers	3	0.0%
Other Vacant	474	2.5%
Total Vacancy Rate	11.7%	

Households by Tenure and Mortgage Status

Total	16,704	100.0%
Owner Occupied	10,022	60.0%
Owned with a Mortgage/Loan	7,108	42.6%
Owned Free and Clear	2,914	17.4%
Average Household Size	2.29	
Renter Occupied	6,682	40.0%
Average Household Size	2.14	

Owner-occupied Housing Units by Race of Householder

Total	10,021	100.0%
Householder is White Alone	9,336	93.2%
Householder is Black Alone	506	5.0%
Householder is American Indian Alone	7	0.1%
Householder is Asian Alone	80	0.8%
Householder is Pacific Islander Alone	1	0.0%
Householder is Some Other Race Alone	24	0.2%
Householder is Two or More Races	67	0.7%
Owner-occupied Housing Units with Hispanic Householder	74	0.7%

Renter-occupied Housing Units by Race of Householder

Total	6,682	100.0%
Householder is White Alone	5,038	75.4%
Householder is Black Alone	1,250	18.7%
Householder is American Indian Alone	31	0.5%
Householder is Asian Alone	129	1.9%
Householder is Pacific Islander Alone	2	0.0%
Householder is Some Other Race Alone	114	1.7%
Householder is Two or More Races	118	1.8%
Renter-occupied Housing Units with Hispanic Householder	233	3.5%

Average Household Size by Race/Hispanic Origin of Householder

Householder is White Alone	2.22
Householder is Black Alone	2.16
Householder is American Indian Alone	2.11
Householder is Asian Alone	2.73
Householder is Pacific Islander Alone	2.33
Householder is Some Other Race Alone	3.55
Householder is Two or More Races	2.35
Householder is Hispanic	3.30

Source: U.S. Census Bureau, Census 2010 Summary File 1.



Demographic and Income Profile

970 Louisville Rd, Frankfort, Kentucky, 40601
 Ring: 1 mile radius

Prepared by Esri
 Latitude: 38.18100
 Longitude: -84.89369

Summary	Census 2010	2016	2021
Population	5,065	5,123	5,186
Households	2,385	2,415	2,447
Families	1,234	1,217	1,216
Average Household Size	2.06	2.06	2.06
Owner Occupied Housing Units	1,297	1,213	1,213
Renter Occupied Housing Units	1,088	1,202	1,234
Median Age	42.5	43.6	44.0
Trends: 2016 - 2021 Annual Rate	Area	State	National
Population	0.24%	0.56%	0.84%
Households	0.26%	0.53%	0.79%
Families	-0.02%	0.40%	0.72%
Owner HHs	0.00%	0.52%	0.73%
Median Household Income	3.39%	2.28%	1.86%

Households by Income	2016		2021	
	Number	Percent	Number	Percent
<\$15,000	388	16.1%	398	16.3%
\$15,000 - \$24,999	288	11.9%	250	10.2%
\$25,000 - \$34,999	301	12.5%	195	8.0%
\$35,000 - \$49,999	380	15.7%	362	14.8%
\$50,000 - \$74,999	398	16.5%	449	18.3%
\$75,000 - \$99,999	222	9.2%	269	11.0%
\$100,000 - \$149,999	311	12.9%	371	15.2%
\$150,000 - \$199,999	85	3.5%	107	4.4%
\$200,000+	42	1.7%	45	1.8%
Median Household Income	\$42,880		\$50,664	
Average Household Income	\$59,474		\$66,317	
Per Capita Income	\$28,725		\$31,999	

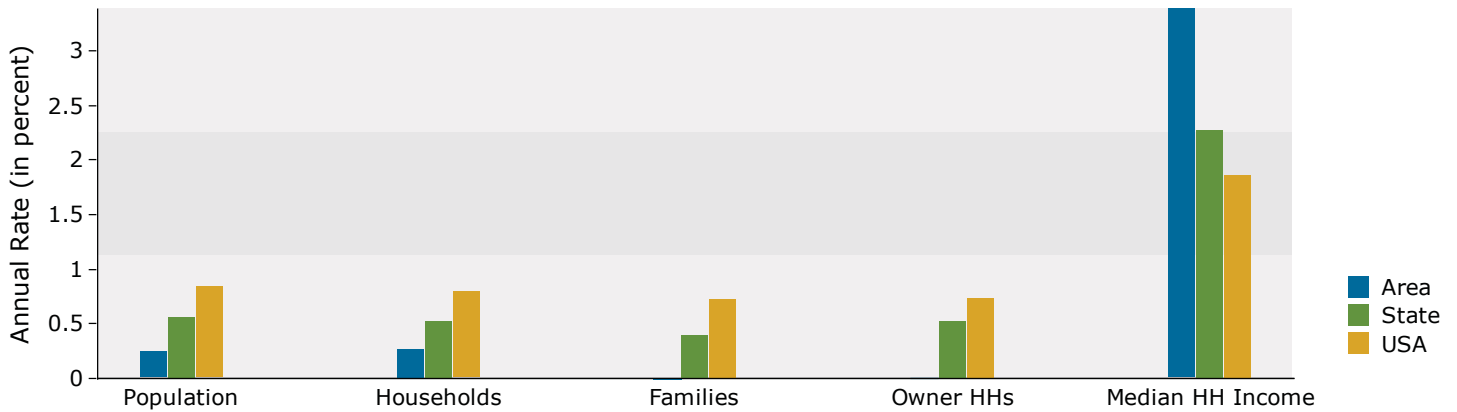
Population by Age	Census 2010		2016		2021	
	Number	Percent	Number	Percent	Number	Percent
0 - 4	287	5.7%	271	5.3%	277	5.3%
5 - 9	301	5.9%	270	5.3%	266	5.1%
10 - 14	260	5.1%	284	5.5%	268	5.2%
15 - 19	267	5.3%	247	4.8%	274	5.3%
20 - 24	314	6.2%	304	5.9%	306	5.9%
25 - 34	611	12.1%	662	12.9%	671	12.9%
35 - 44	650	12.8%	610	11.9%	590	11.4%
45 - 54	698	13.8%	642	12.5%	611	11.8%
55 - 64	718	14.2%	732	14.3%	681	13.1%
65 - 74	444	8.8%	565	11.0%	664	12.8%
75 - 84	337	6.7%	342	6.7%	375	7.2%
85+	177	3.5%	192	3.7%	202	3.9%

Race and Ethnicity	Census 2010		2016		2021	
	Number	Percent	Number	Percent	Number	Percent
White Alone	4,414	87.1%	4,359	85.1%	4,315	83.2%
Black Alone	408	8.1%	457	8.9%	496	9.6%
American Indian Alone	17	0.3%	24	0.5%	30	0.6%
Asian Alone	78	1.5%	110	2.1%	146	2.8%
Pacific Islander Alone	0	0.0%	0	0.0%	0	0.0%
Some Other Race Alone	48	0.9%	56	1.1%	64	1.2%
Two or More Races	100	2.0%	117	2.3%	135	2.6%
Hispanic Origin (Any Race)	151	3.0%	179	3.5%	209	4.0%

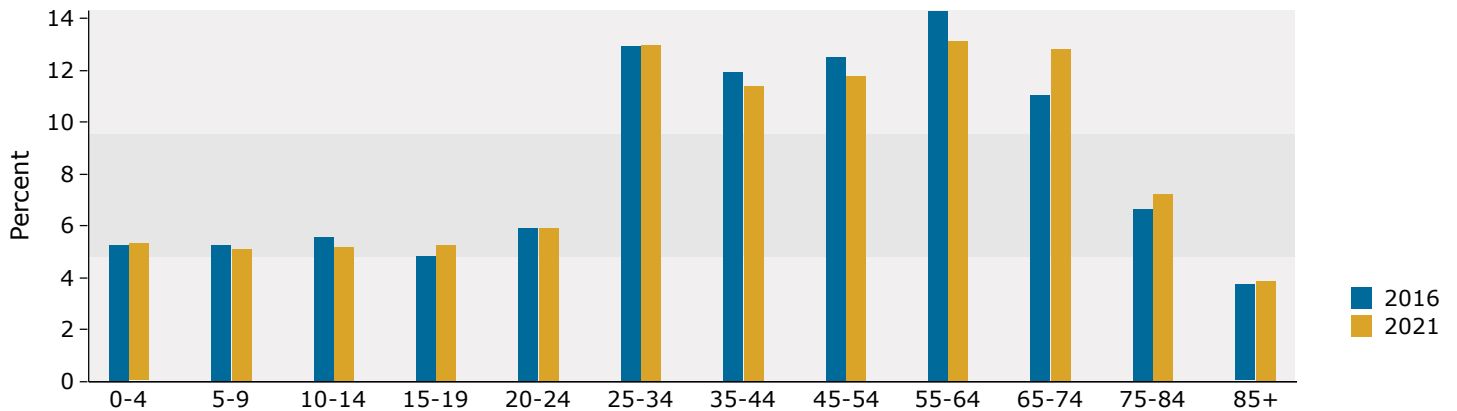
Data Note: Income is expressed in current dollars.

Source: U.S. Census Bureau, Census 2010 Summary File 1. Esri forecasts for 2016 and 2021.

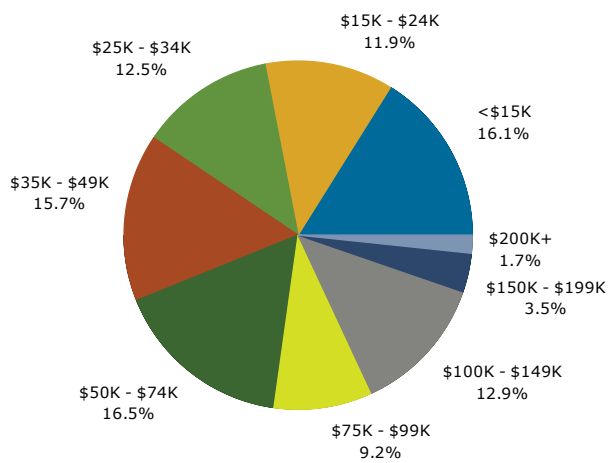
Trends 2016-2021



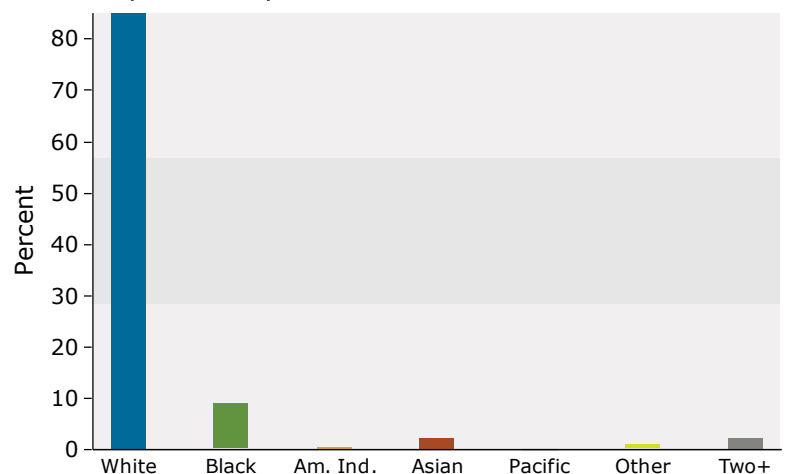
Population by Age



2016 Household Income



2016 Population by Race



2016 Percent Hispanic Origin: 3.5%

Source: U.S. Census Bureau, Census 2010 Summary File 1. Esri forecasts for 2016 and 2021.



Demographic and Income Profile

970 Louisville Rd, Frankfort, Kentucky, 40601
 Ring: 3 mile radius

Prepared by Esri
 Latitude: 38.18100
 Longitude: -84.89369

Summary	Census 2010	2016	2021
Population	19,672	20,054	20,455
Households	8,505	8,718	8,902
Families	4,605	4,626	4,677
Average Household Size	2.11	2.11	2.12
Owner Occupied Housing Units	4,461	4,240	4,329
Renter Occupied Housing Units	4,044	4,478	4,573
Median Age	38.2	39.4	40.1
Trends: 2016 - 2021 Annual Rate	Area	State	National
Population	0.40%	0.56%	0.84%
Households	0.42%	0.53%	0.79%
Families	0.22%	0.40%	0.72%
Owner HHs	0.42%	0.52%	0.73%
Median Household Income	2.55%	2.28%	1.86%

Households by Income	2016		2021	
	Number	Percent	Number	Percent
<\$15,000	1,701	19.5%	1,767	19.8%
\$15,000 - \$24,999	1,204	13.8%	1,070	12.0%
\$25,000 - \$34,999	1,000	11.5%	698	7.8%
\$35,000 - \$49,999	1,336	15.3%	1,329	14.9%
\$50,000 - \$74,999	1,393	16.0%	1,520	17.1%
\$75,000 - \$99,999	862	9.9%	1,051	11.8%
\$100,000 - \$149,999	934	10.7%	1,121	12.6%
\$150,000 - \$199,999	185	2.1%	235	2.6%
\$200,000+	104	1.2%	111	1.2%
Median Household Income	\$39,023		\$44,254	
Average Household Income	\$53,290		\$58,807	
Per Capita Income	\$24,142		\$26,513	

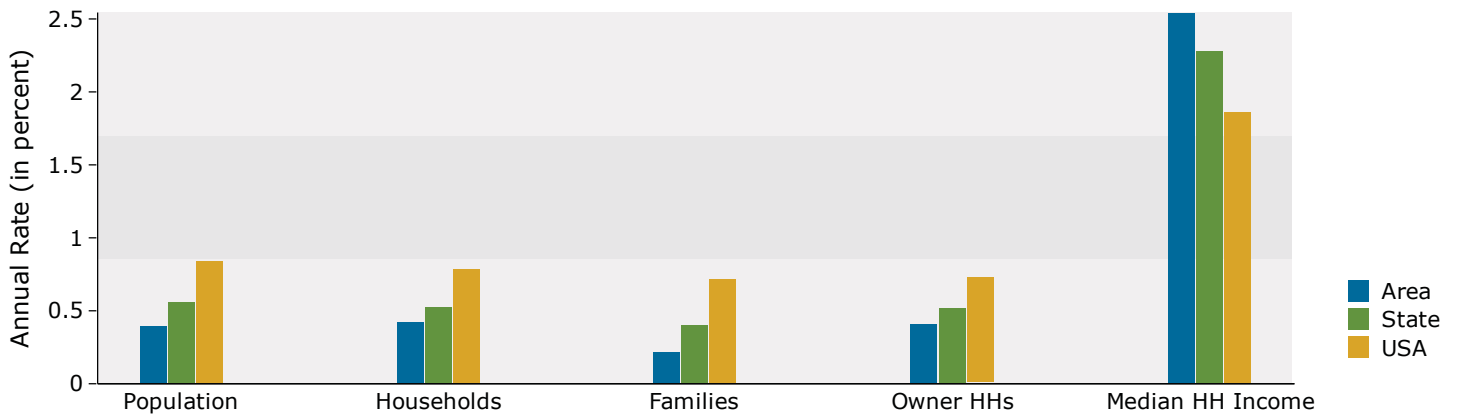
Population by Age	Census 2010		2016		2021	
	Number	Percent	Number	Percent	Number	Percent
0 - 4	1,137	5.8%	1,088	5.4%	1,087	5.3%
5 - 9	1,125	5.7%	1,086	5.4%	1,075	5.3%
10 - 14	1,002	5.1%	1,033	5.2%	1,057	5.2%
15 - 19	1,524	7.7%	1,439	7.2%	1,474	7.2%
20 - 24	1,593	8.1%	1,573	7.8%	1,548	7.6%
25 - 34	2,642	13.4%	2,731	13.6%	2,742	13.4%
35 - 44	2,523	12.8%	2,444	12.2%	2,437	11.9%
45 - 54	2,764	14.1%	2,554	12.7%	2,439	11.9%
55 - 64	2,528	12.9%	2,694	13.4%	2,640	12.9%
65 - 74	1,466	7.5%	1,948	9.7%	2,286	11.2%
75 - 84	910	4.6%	959	4.8%	1,139	5.6%
85+	457	2.3%	504	2.5%	530	2.6%

Race and Ethnicity	Census 2010		2016		2021	
	Number	Percent	Number	Percent	Number	Percent
White Alone	15,808	80.4%	15,709	78.3%	15,617	76.3%
Black Alone	2,797	14.2%	3,004	15.0%	3,200	15.6%
American Indian Alone	55	0.3%	72	0.4%	89	0.4%
Asian Alone	361	1.8%	509	2.5%	672	3.3%
Pacific Islander Alone	3	0.0%	3	0.0%	3	0.0%
Some Other Race Alone	181	0.9%	214	1.1%	246	1.2%
Two or More Races	467	2.4%	542	2.7%	628	3.1%
Hispanic Origin (Any Race)	460	2.3%	541	2.7%	633	3.1%

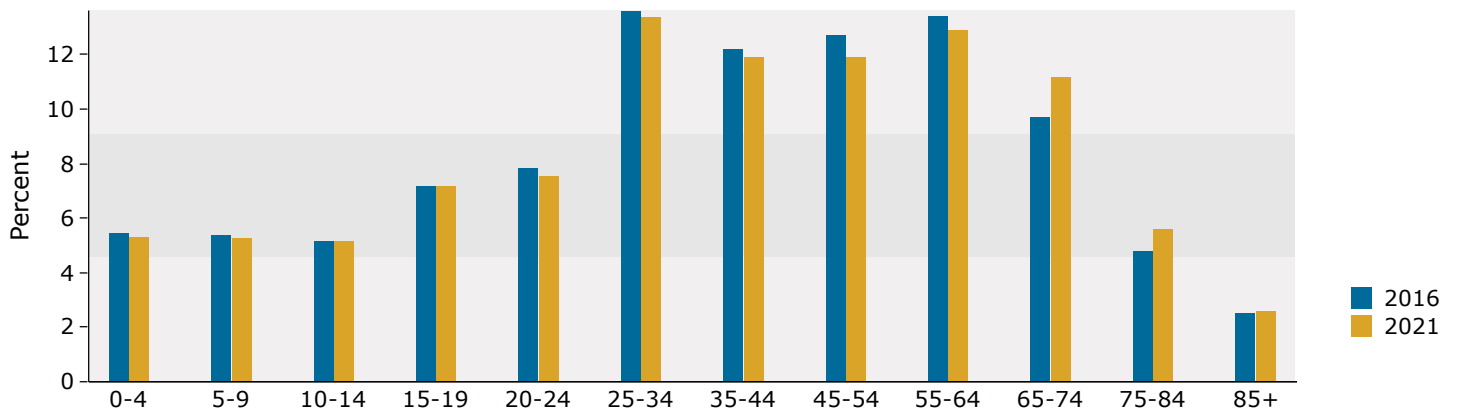
Data Note: Income is expressed in current dollars.

Source: U.S. Census Bureau, Census 2010 Summary File 1. Esri forecasts for 2016 and 2021.

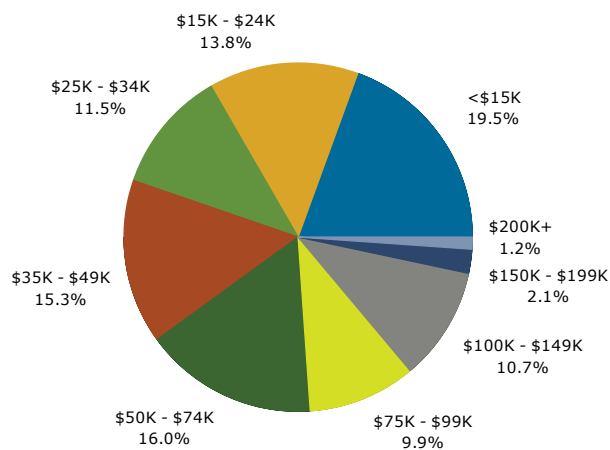
Trends 2016-2021



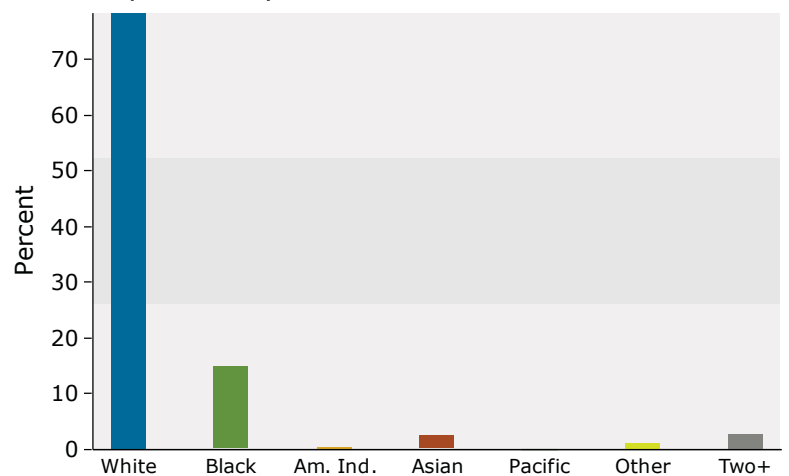
Population by Age



2016 Household Income



2016 Population by Race



2016 Percent Hispanic Origin: 2.7%

Source: U.S. Census Bureau, Census 2010 Summary File 1. Esri forecasts for 2016 and 2021.



Demographic and Income Profile

970 Louisville Rd, Frankfort, Kentucky, 40601
 Ring: 5 mile radius

Prepared by Esri
 Latitude: 38.18100
 Longitude: -84.89369

Summary	Census 2010	2016	2021
Population	39,271	40,120	40,960
Households	16,704	17,141	17,518
Families	9,927	10,009	10,142
Average Household Size	2.23	2.23	2.23
Owner Occupied Housing Units	10,022	9,654	9,837
Renter Occupied Housing Units	6,682	7,487	7,681
Median Age	38.9	40.1	40.7
Trends: 2016 - 2021 Annual Rate	Area	State	National
Population	0.42%	0.56%	0.84%
Households	0.44%	0.53%	0.79%
Families	0.26%	0.40%	0.72%
Owner HHs	0.38%	0.52%	0.73%
Median Household Income	2.86%	2.28%	1.86%

Households by Income	2016		2021	
	Number	Percent	Number	Percent
<\$15,000	2,632	15.4%	2,731	15.6%
\$15,000 - \$24,999	2,142	12.5%	1,893	10.8%
\$25,000 - \$34,999	1,945	11.3%	1,334	7.6%
\$35,000 - \$49,999	2,777	16.2%	2,706	15.4%
\$50,000 - \$74,999	3,002	17.5%	3,267	18.6%
\$75,000 - \$99,999	1,936	11.3%	2,325	13.3%
\$100,000 - \$149,999	2,035	11.9%	2,436	13.9%
\$150,000 - \$199,999	449	2.6%	583	3.3%
\$200,000+	222	1.3%	243	1.4%
Median Household Income	\$43,834		\$50,477	
Average Household Income	\$57,831		\$64,004	
Per Capita Income	\$25,409		\$28,065	

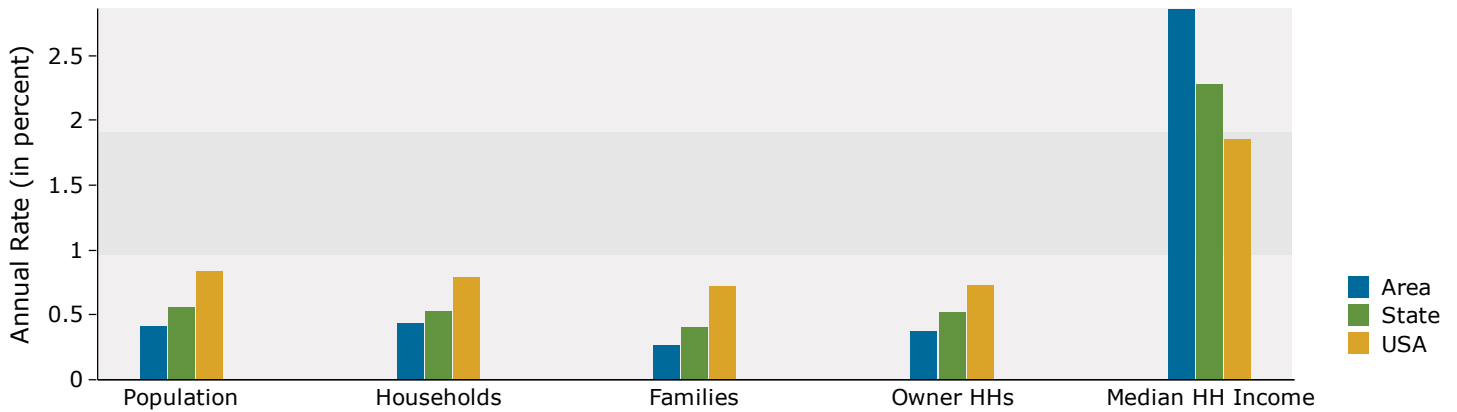
Population by Age	Census 2010		2016		2021	
	Number	Percent	Number	Percent	Number	Percent
0 - 4	2,404	6.1%	2,293	5.7%	2,289	5.6%
5 - 9	2,407	6.1%	2,320	5.8%	2,327	5.7%
10 - 14	2,233	5.7%	2,298	5.7%	2,351	5.7%
15 - 19	2,736	7.0%	2,611	6.5%	2,709	6.6%
20 - 24	2,764	7.0%	2,712	6.8%	2,600	6.3%
25 - 34	5,101	13.0%	5,294	13.2%	5,295	12.9%
35 - 44	5,071	12.9%	4,948	12.3%	5,061	12.4%
45 - 54	5,745	14.6%	5,331	13.3%	4,994	12.2%
55 - 64	5,206	13.3%	5,529	13.8%	5,498	13.4%
65 - 74	3,018	7.7%	3,980	9.9%	4,667	11.4%
75 - 84	1,821	4.6%	1,915	4.8%	2,239	5.5%
85+	764	1.9%	887	2.2%	929	2.3%

Race and Ethnicity	Census 2010		2016		2021	
	Number	Percent	Number	Percent	Number	Percent
White Alone	32,186	82.0%	32,011	79.8%	31,862	77.8%
Black Alone	4,845	12.3%	5,313	13.2%	5,714	14.0%
American Indian Alone	87	0.2%	115	0.3%	143	0.3%
Asian Alone	607	1.5%	858	2.1%	1,133	2.8%
Pacific Islander Alone	8	0.0%	9	0.0%	9	0.0%
Some Other Race Alone	582	1.5%	690	1.7%	791	1.9%
Two or More Races	956	2.4%	1,124	2.8%	1,308	3.2%
Hispanic Origin (Any Race)	1,226	3.1%	1,449	3.6%	1,695	4.1%

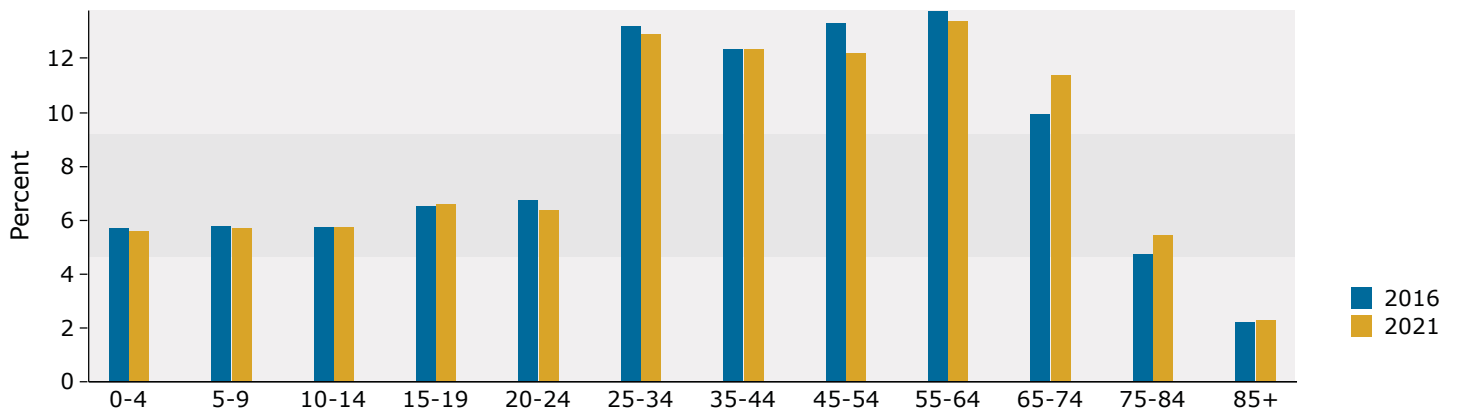
Data Note: Income is expressed in current dollars.

Source: U.S. Census Bureau, Census 2010 Summary File 1. Esri forecasts for 2016 and 2021.

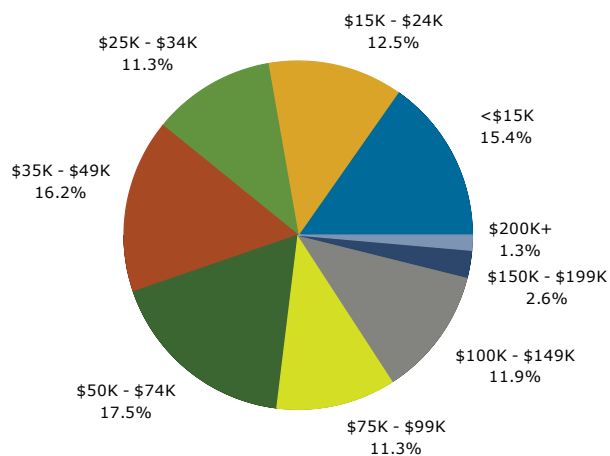
Trends 2016-2021



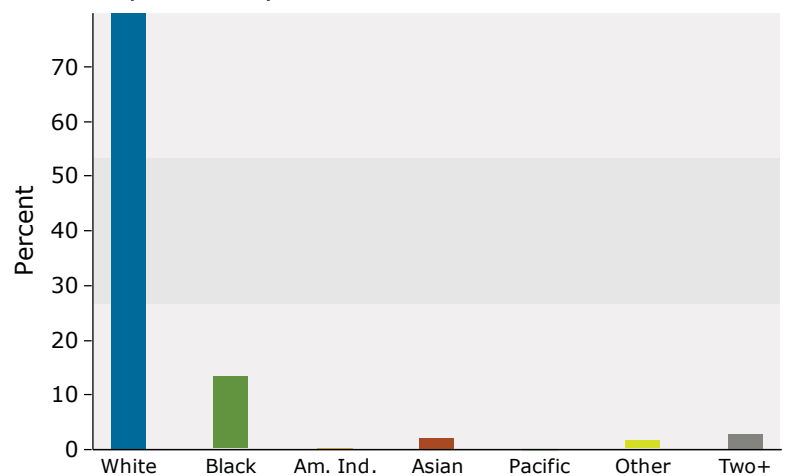
Population by Age



2016 Household Income

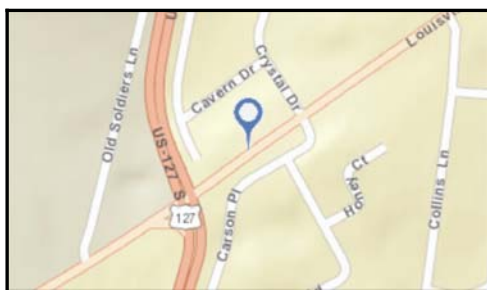
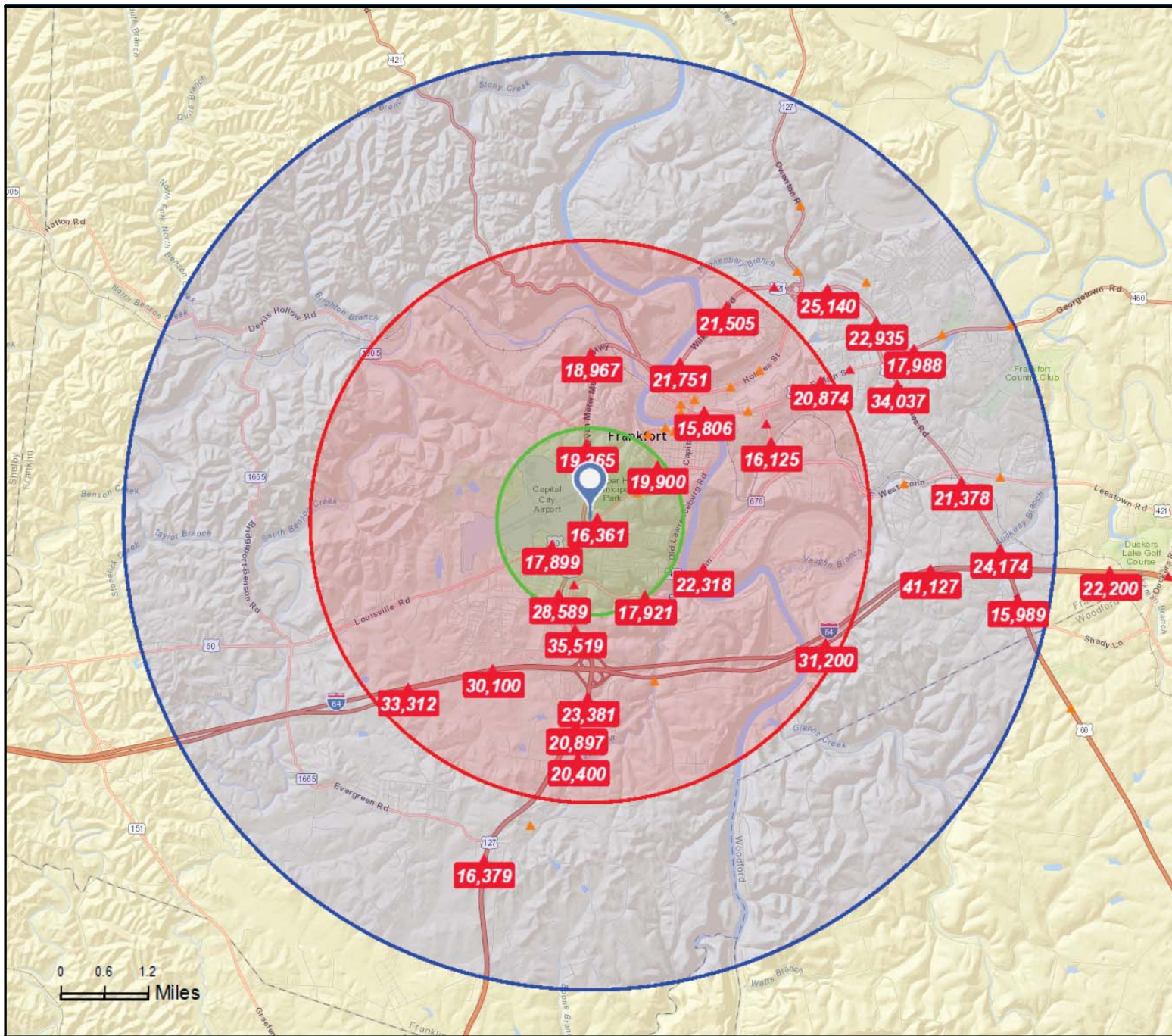


2016 Population by Race

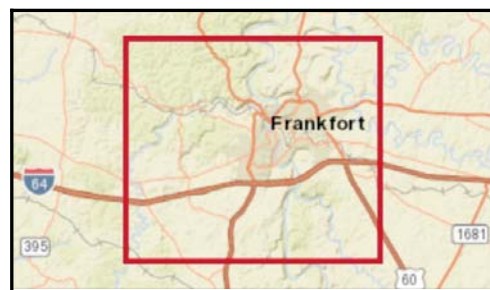


2016 Percent Hispanic Origin: 3.6%

Source: U.S. Census Bureau, Census 2010 Summary File 1. Esri forecasts for 2016 and 2021.



- Average Daily Traffic Volume**
- ▲ Up to 6,000 vehicles per day
 - ▲ 6,001 - 15,000
 - ▲ 15,001 - 30,000
 - ▲ 30,001 - 50,000
 - ▲ 50,001 - 100,000
 - ▲ More than 100,000 per day



Source: ©2016 Kalibrate Technologies

August 23, 2016